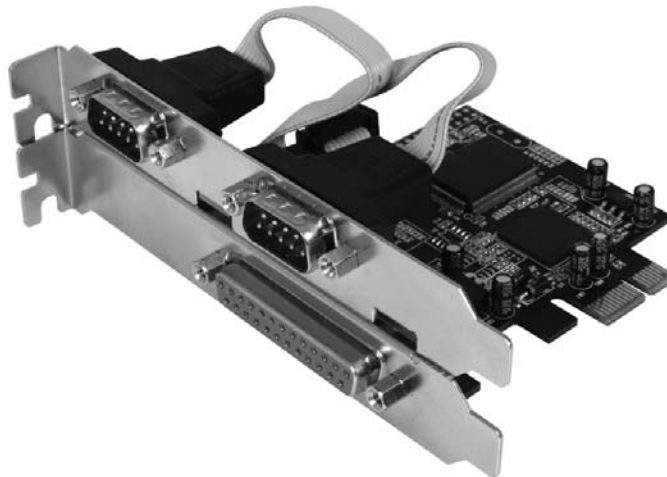


Serial & Parallel PCI Express Card

2 Serial 1 Parallel PCI Express Card

PEX2S1P

Instruction Manual



Actual product may vary from photo

StarTech.com

The Professionals' Source for Hard-to-Find Computer Parts

FCC Compliance Statement

This equipment has been tested and found to comply with the limits for a Class B digital device, pursuant to part 15 of the FCC Rules. These limits are designed to provide reasonable protection against harmful interference in a residential installation. This equipment generates, uses and can radiate radio frequency energy and, if not installed and used in accordance with the instructions, may cause harmful interference to radio communications. However, there is no guarantee that interference will not occur in a particular installation. If this equipment does cause harmful interference to radio or television reception, which can be determined by turning the equipment off and on, the user is encouraged to try to correct the interference by one or more of the following measures:

- Reorient or relocate the receiving antenna.
- Increase the separation between the equipment and receiver.
- Connect the equipment into an outlet on a circuit different from that to which the receiver is connected.
- Consult the dealer or an experienced radio/TV technician for help.

Use of Trademarks, Registered Trademarks, and other Protected Names and Symbols

This manual may make reference to trademarks, registered trademarks, and other protected names and/or symbols of third-party companies not related in any way to StarTech.com. Where they occur these references are for illustrative purposes only and do not represent an endorsement of a product or service by StarTech.com, or an endorsement of the product(s) to which this manual applies by the third-party company in question. Regardless of any direct acknowledgement elsewhere in the body of this document, StarTech.com hereby acknowledges that all trademarks, registered trademarks, service marks, and other protected names and/or symbols contained in this manual and related documents are the property of their respective holders.

Table of Contents

Introduction	1
Features	1
Before you begin	1
Contents	1
System Requirements	1
Installation	2
Installing the drivers	2
Verifying installation	5
COM port address configuration	5
Parallel port address configuration	5
Specifications	6
Technical Support	7
Warranty information	7

Introduction

Thank you for purchasing a StarTech.com PCI Express 2 Serial + 1 Parallel Card. This card will allow you to add serial and parallel connectivity for optimized performance from your peripheral devices, while taking advantage of the speed and power of PCI Express with plug and play connections to devices such as printers, scanners and more.

Features

- Compliant with PCI Express Base Specification 1.0a
- Supports Standard Parallel Port(SPP), Enhanced Parallel Port(EPP) & Enhanced Capability Port(ECP)
- Parallel data transfer rates of up to 1.5MB/Sec
- Serial data transfer rates up to 115200bps
- Supports 2 x 16550 Fast UART serial port

Before you Begin

Contents

- PCI Express Parallel/Serial Card(1)
- Instruction Manual(1)
- Driver CD(1)

System Requirements

- Windows 2000/XP/Server 2003
- PCI Express enabled computer with an available PCI Express slot

Installation

1. Make sure that your system is unplugged and that you are grounded.
2. Remove the cover of your system (see your computer's user manual for details, if necessary) and gently turn your computer onto its side, so that the PCI Express expansion slot openings on the motherboard are facing upwards.
3. Locate an empty PCI Express slot and remove the metal plate that covers the corresponding rear bracket. You may need a Phillips screwdriver to perform this step. Retain the screw! You will need it to secure the card later.
4. Gently insert the card into the empty slot, making sure it is firmly seated.
5. Secure the card in place using the screw you removed in Step 3.
6. Secure the serial ports to an adjacent rear bracket, and ensure that the serial ports are connected snugly to the PEC2S1P circuit board.
7. Replace and secure the computer cover.

Installing the Drivers

Upon rebooting the computer, Windows will detect the newly installed card, and launch the **Found New Hardware Wizard**.

Windows 2000

1. When the **Found New Hardware Wizard** appears, click **Next**.
2. Select **Search for a suitable driver for my device (recommended)**, and click **Next**.



3. Click **Specify a location**, uncheck the other boxes, then click **Next**.

Instruction Manual

4. Insert the Driver CD, type in **D:\PCIe\2S1P\2000**, then click **OK**. (Please note: D:\ designates the drive letter assigned to your CD-ROM/DVD-ROM drive. If this is not the case, please modify the path accordingly).



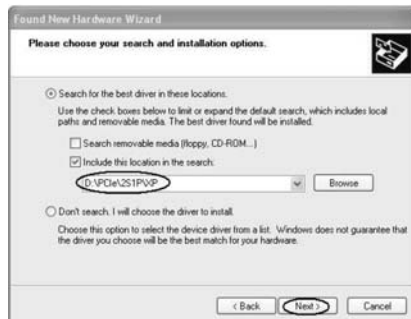
5. Click **Next** and **Finish**.
6. Restart Windows to complete the installation.

Windows XP

1. At the **Found New Hardware Wizard**, select **Install from a list or specific location (Advanced)**, then click **Next**.



2. Insert the Driver CD, check **Include this location in the search**, uncheck the other box, type in **D:\PCIe\2S1P\XP**, then click **OK**. (Please note: D:\ designates the drive letter assigned to your CD-ROM/DVD-ROM drive. If this is not the case, please modify the path accordingly).



Instruction Manual

3. If the **Hardware Installation** window pops up, click **Continue Anyway**, then **Finish**. Please note that the driver has been thoroughly tested for stability and compatibility.
4. Repeat steps 1-3 three more times.
5. Restart Windows to complete the installation.

Windows Server 2003

1. At the **Found New Hardware Wizard**, select **Install from a list or specific location (Advanced)**, then click **Next**.



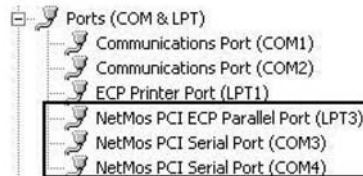
2. Insert the Driver CD, check **Include this location in the search**, uncheck the other box, and type in: **D:\PCIe\2S1P\2003**, then click **OK**. (Please note: D:\ designates the drive letter assigned to your CD-ROM/DVD-ROM drive. If this is not the case, please modify the path accordingly).



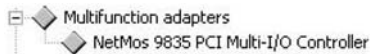
3. If the **Hardware Installation** window pops up, click **Continue Anyway**, then **Finish**. Please note that the driver has been thoroughly tested for stability and compatibility.
4. Repeat steps 1-3 three more times.
5. Restart Windows to complete the installation.

Verifying Installation

1. Right-click **My Computer**, then click **Manage**. Click **Device Manager**.
2. Click on the [+] symbol in front of **Ports (COM & LPT)**. Here, you should see two listings for **NetMos PCI Serial Port**, and one **NetMos PCI ECP Parallel Port**.



3. Double-click **Multifunction adapters**. Here, **NetMos9835 PCI Multi-I/O Controller** should be displayed.



COM Port Address configuration

Some serial devices need a specific COM port in order to function correctly. If your serial devices work properly when used with the ports provided by PEX2S1P, there is no need to make changes to address settings.

1. From the **Device Manager** window, double-click **Ports (COM & LPT)**, then double-click the **NetMos PCI Serial Port** you want to change.
2. Click the **Settings** tab, and select **Advanced**.
3. Click the down arrow next to the **COM Port Number** drop-down box, select a COM port that is not in use, then click **OK**.
4. Click **OK**, then close **Device Manager** to save the changes. Follow steps 1-4 again to change the second serial port if needed.

Parallel Port Address configuration

Some parallel devices require a specific port designation, in order for the devices to function properly. If your peripherals are functioning correctly with the newly installed ports, there is no need to modify the parallel port address. However, if you are experiencing difficulties:

1. From the **Device Manager** window, double-click **Ports (COM & LPT)**, then double-click

the **NetMos PCI ECP Parallel Port**.

2. Select the **Port Settings** tab.
3. At the **LPT Port Number** box, click on the down arrow and select an LPT port that is not in use. Following this selection, please click on **OK** to save your changes.

Specifications

Bus Type	PCI Express
Connectors	1 x DB25 Female Parallel Connector 2 x DB9 Male Serial Connector
Maximum Data Transfer Rate	Serial: 115200bps Parallel: 1.5MB/Sec
OS Support	Windows 2000/Xp/Server 2003
Product Dimensions	92x21x120 mm
Product Weight	0.1kg
Certifications	FCC, CE, RoHS, WEEE

Technical Support

StarTech.com's lifetime technical support is an integral part of our commitment to provide industry-leading solutions. If you ever need help with your product, visit www.startech.com/support and access our comprehensive selection of online tools, documentation, and downloads.

Warranty Information

This product is backed by a lifetime warranty. In addition, StarTech.com warrants its products against defects in materials and workmanship for the periods noted, following the initial date of purchase. During this period, the products may be returned for repair, or replacement with equivalent products at our discretion. The warranty covers parts and labor costs only. StarTech.com does not warrant its products from defects or damages arising from misuse, abuse, alteration, or normal wear and tear.

Limitation of Liability

In no event shall the liability of StarTech.com Ltd. and StarTech.com USA LLP (or their officers, directors, employees or agents) for any damages (whether direct or indirect, special, punitive, incidental, consequential, or otherwise), loss of profits, loss of business, or any pecuniary loss, arising out of or related to the use of the product exceed the actual price paid for the product.

Some states do not allow the exclusion or limitation of incidental or consequential damages. If such laws apply, the limitations or exclusions contained in this statement may not apply to you.