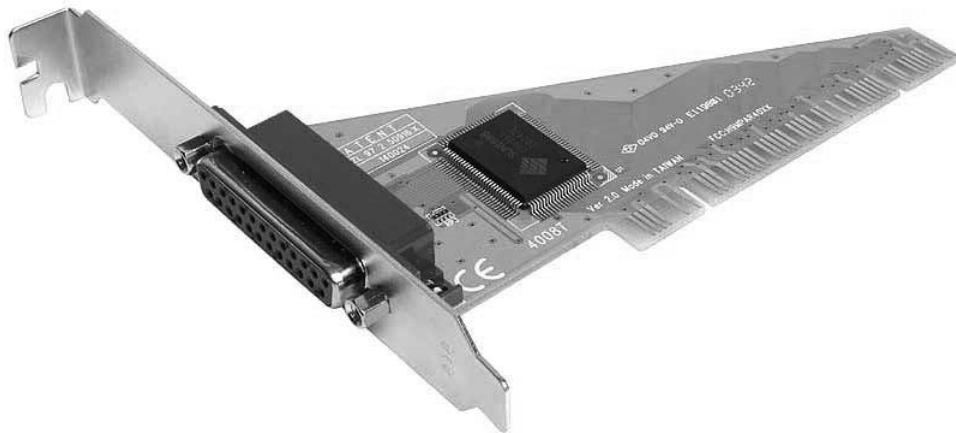


PCI Parallel Card

1 Port EPP/ECP PCI Parallel Card

PCI1P

Instruction Manual



Actual product may vary from photo

StarTech.com

The Professionals' Source for Hard-to-Find Computer Parts

Table of Contents

Introduction	1
Features	1
Before you begin	1
Contents	1
System Requirements	1
Installation	2
Installing the drivers	2
Verifying Parallel card installation	3
Configuration the LPT port	4
Remap the Parallel port I/O address	4
Specifications	5
Technical Support	5
Warranty information	5

Introduction

Thank you for purchasing a StarTech.com PCI Parallel Card. This card will allow you to add a DB25 parallel port, for optimized performance from your parallel devices, and plug and play connections to devices such as printers, scanners and more.

Features

- Offers I/O access speeds up to 8 times as fast as existing ISA bus serial ports
- IRQ sharing eliminates IRQ conflicts
- Compatible with a wide array of parallel devices

Before you Begin

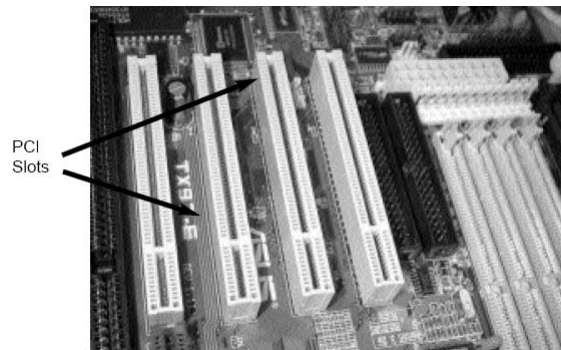
Contents

- PCI Parallel Card(1)
- Instruction Manual(1)
- Driver CD(1)

System Requirements

- Minimum operating system requirement: Windows 98SE / ME / 2000 / XP or later; DOS or Linux
- Pentium class computer with an available PCI slot

Installation



1. Make sure that your system is unplugged and you are grounded.
2. Remove the cover of your system (see your computer's user manual for details, if necessary) and gently turn your computer onto its side, so that the PCI expansion slot openings on the motherboard are facing upwards.
3. Locate an empty PCI slot (usually white in color) and remove the metal plate that covers the corresponding rear bracket. You may need a Phillips screwdriver to perform this step. Retain the screw! You will need it to secure the card later.
4. Gently insert the card into the empty slot, making sure it is firmly seated.
5. Secure the card in place using the screw you removed in Step 3.
6. Replace and secure the computer cover.

Installing the Drivers

Windows 98SE/ME

Upon booting up for the first time following the physical installation of the PCI Parallel card, Windows will detect that the card is present and prompt for driver installation. Insert the driver CD in your CD/DVD-ROM drive, and direct Windows to search for the correct driver, located on the driver disk, in the following path: **D:\IO\PCI IP\Win9x**

Windows 2000/XP/2003

Upon booting up for the first time following the physical installation of the PCI Parallel card, Windows will detect that the card is present and prompt for driver installation. Insert the driver CD in your CD/DVD-ROM drive, and direct Windows to search for the correct driver in the following path: **D:\IO\PCI IP\WHQL Driver for 2K_XP_2003**, where D:/ specifies the CD/DVD-ROM drive letter designation.

Instruction Manual

Windows NT 4.0 - Upon booting up for the first time following the physical installation of the PCI Parallel card, Windows will detect that the card is present and prompt for driver installation. Insert the driver CD in your CD/DVD-ROM drive, and direct Windows to search for the correct driver in the following path: **D:\IO\PCI IO\WHQL Driver for 2K_XP_2003**, where D:/ specifies the CD/DVD-ROM drive letter designation.

Linux - Detailed instructions for Linux installations are located on the accompanying Driver CD, in the following locations:

D:\IO\PCI IO\Linux\Red Hat V8.0.pdf

D:\IO\PCI IO\Linux\Red Hat V6.0.pdf

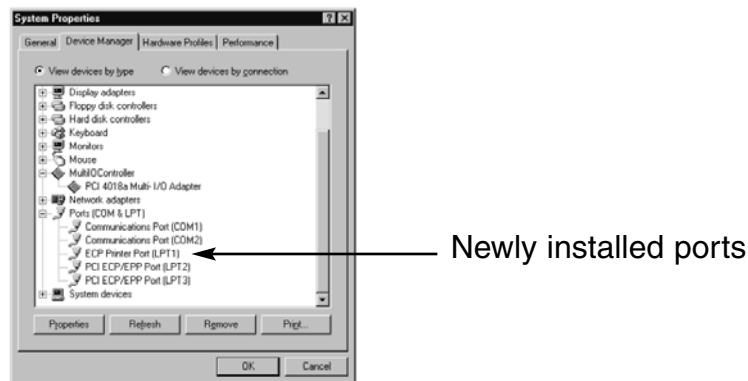
DOS - To install the necessary drivers from within DOS, please locate and execute the following file:

D:\IO\PCI IO\DOS\install.exe

Verifying PCI Parallel Card installation

Once the software installation has completed, verify that the hardware has successfully been installed on your system:

1. Open **Control Panel**.
2. Open **System**.
3. Open **Hardware**.
4. Open **Device Manager**.
5. Click on **Ports**, to display the newly installed port, as shown below. If the port does not appear, you may be required to re-install the driver software.



Configuring the LPT port

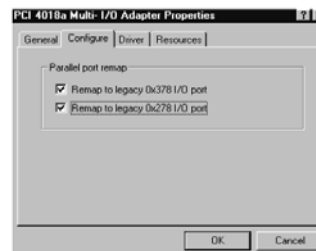
1. Be sure your printer or other parallel peripheral is securely connected to the PCI Parallel card.
2. Open the Windows **Control Panel**, open **Printers** and click **Add Printer**. This will launch the **Add Printer Wizard**.
3. If you want to connect a printer to your PCI Parallel Card, please select **PCI ECP/EPP Port**, and click next. Follow any further installation instructions from within Windows.



Note: If you wish to connect a scanner or zip disk to the parallel port, you will be required to remap the Parallel Port I/O address to 0x378 or 0x278 under Windows 95 / 98SE / ME.

Remap the Parallel Port I/O address

1. Double-click **Multi IO Controller** from within the Windows Device Manager. Right-click on **PCI Multi I/O adapter**, and select **Properties**.
2. Select the **Configure** tab. If you want to remap the I/O address, select **Remap to legacy 0x378 and/or 0x278 I/O ports**. Click **OK**. This setting will take effect following the next system reboot.



3. Once the computer has rebooted, verify that the changes have taken effect by browsing to **System Properties**. Once you have ensured that the changes have been applied, close out of **System Properties**. Your card is now configured for use.

Specifications

Bus Type	PCI 5V
Connectors	PCI220USB: 2 External USB Type A Female 1 internal USB Type A Female PCI420USB: 4 External USB Type A Female 1 Internal USB Type A Female
Maximum Data Transfer Rate	480 Mbps
Chipset	VIA VT6212L
OS Support	Windows 98SE / ME / 2000 / XP or later
Product Dimensions	PCI220USB: 127 x 120 x 20 mm PCI420USB: 127 x 120 x 20 mm
Product Net Weight	PCI220USB: 40g PCI420USB: 45g

Technical Support

StarTech.com's lifetime technical support is an integral part of our commitment to provide industry-leading solutions. If you ever need help with your product, visit www.startech.com/support and access our comprehensive selection of online tools, documentation, and downloads.

Warranty Information

This product is backed by a one-year warranty. In addition, StarTech.com warrants its products against defects in materials and workmanship for the periods noted, following the initial date of purchase. During this period, the products may be returned for repair, or replacement with equivalent products at our discretion. The warranty covers parts and labor costs only. StarTech.com does not warrant its products from defects or damages arising from misuse, abuse, alteration, or normal wear and tear.

Limitation of Liability

In no event shall the liability of StarTech.com Ltd. and StarTech.com USA LLP (or their officers, directors, employees or agents) for any damages (whether direct or indirect, special, punitive, incidental, consequential, or otherwise), loss of profits, loss of business, or any pecuniary loss, arising out of or related to the use of the product exceed the actual price paid for the product.

Some states do not allow the exclusion or limitation of incidental or consequential damages. If such laws apply, the limitations or exclusions contained in this statement may not apply to you.

Revised: 17 October 2006 (Rev. A)