



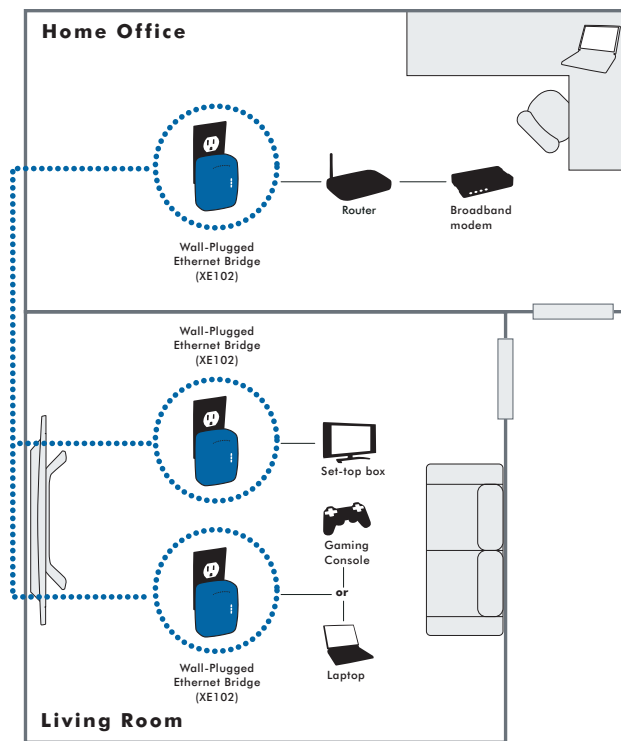
Turns Any Electrical Outlet into a Home Network Connection

- Extends home networks by using existing electrical wires (requires 2 units, sold separately)
- Delivers up to 14 Mbps wired speed
- Simple plug-and-play installation

Features

- Turns electrical sockets into a home network/Internet connection
- Simply plug one XE102 into your router and a second XE102 into the device you wish to network
- Encryption ensures privacy and security

**Plug-and-play connection of
a Powerline Network**



Outlets must be electrically connected in order for Powerline devices to provide a network connection between them.



For a simple way to bring the Internet to any room, look no further than NETGEAR's Powerline Ethernet Adapter. It plugs into an electrical outlet and uses your existing electrical wiring to give your entire household access to your Cable/DSL connection. With no expensive new wiring or cabling to install, you can surf the Web, join in online gaming, send and receive e-mail, and share files and printers, all from different rooms at the same time. The XE102 Powerline Ethernet Adapter is quick to install and plugs right into a wall outlet, reducing clutter and saving valuable desk space. Designed for ease of use, it has new, easy-to-read icon LEDs, and protects your network communications from eavesdroppers and hackers, while not increasing your electricity bill.

System Requirements

- To enable encryption: Windows® 98, ME, 2000 and XP
- For device connection: Available RJ-45 Ethernet Port

Dimensions

- Size: 99.4 x 46.6 x 73 mm (3.92 x 1.84 x 2.88 in)
- Weight: 224 g (7.9 oz)

Environmental Specifications

- Operating temperature: 0° C to 40° C (32 to 104°F)
- Operating relative humidity: 10% to 90% (noncondensing)

Electromagnetic Emissions

- FCC Part 15 Class B

Power and Safety Regulations:

- U/L Certified

Typical Coverage

- Up to 5000 square foot home

Network Ports

- One 10BASE-T Ethernet port
- One 14 Mbps Powerline port

Network Interface

- RJ-45 (10BASE-T Ethernet)
- Electrical plug (Powerline Ethernet)

Performance Standards

- 10 Mbps 10BASE-T
- 14 Mbps HomePlug 1.0 compatible

Powerline Standards

- HomePlug compatible

Ethernet Standards Compliance:

- HomePlug

Ethernet Standards Compliance

- IEEE 802.3 10BASE-T Ethernet

Modulation Schemes

- OFDM Symbol Modulation DQPSK, DBPSK, ROBO Carrier Modulation

Frequency Band

- 4.3 MHz ~ 20.9 MHz

Additional Protocols

- Forward Error Correction (FEC)
- Automatic channel adaptation

Power Supply

- 85 to 135v @ 60 Hz Internal

LEDs

- Unit: Power
- Powerline: Link
- Ethernet: Link/Activity

Warranty

- 3 year warranty

Package Contents

- One XE102 14 Mbps Powerline Ethernet Adapter
- Installation guide
- Ethernet Cable
- Resource CD
- Warranty/Support information card

NETGEAR®

4500 Great America Parkway
Santa Clara, CA 95054 USA
1-888-NETGEAR (638-4327)
E-mail: info@NETGEAR.com
www.NETGEAR.com

© 2007 NETGEAR, Inc. NETGEAR, the NETGEAR logo, Connect with Innovation, Everybody's connecting, the Gear Guy logo, IntelliFi, ProSafe, RangeMax and Smart Wizard are trademarks or registered trademarks of NETGEAR, Inc. in the United States and/or other countries. Microsoft, Windows, and the Windows logo are trademarks or registered trademarks of Microsoft Corporation in the United States and/or other countries. Other brand and product names are trademarks or registered trademarks of their respective holders. Information is subject to change without notice. All rights reserved.

*Free basic installation support provided for 90 days from date of purchase. Advanced product features and configurations are not included in free basic installation support; optional premium support available.

**Actual performance may vary due to operating conditions

D-XE102-1